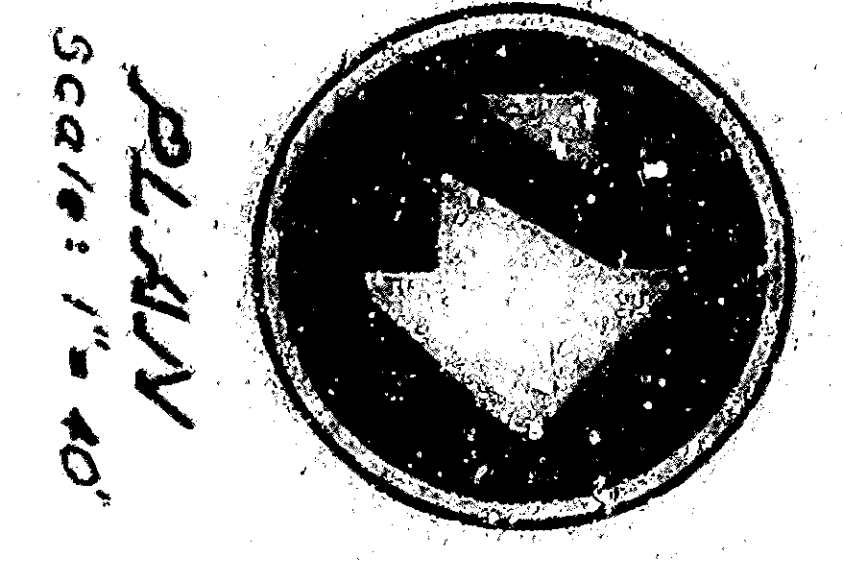
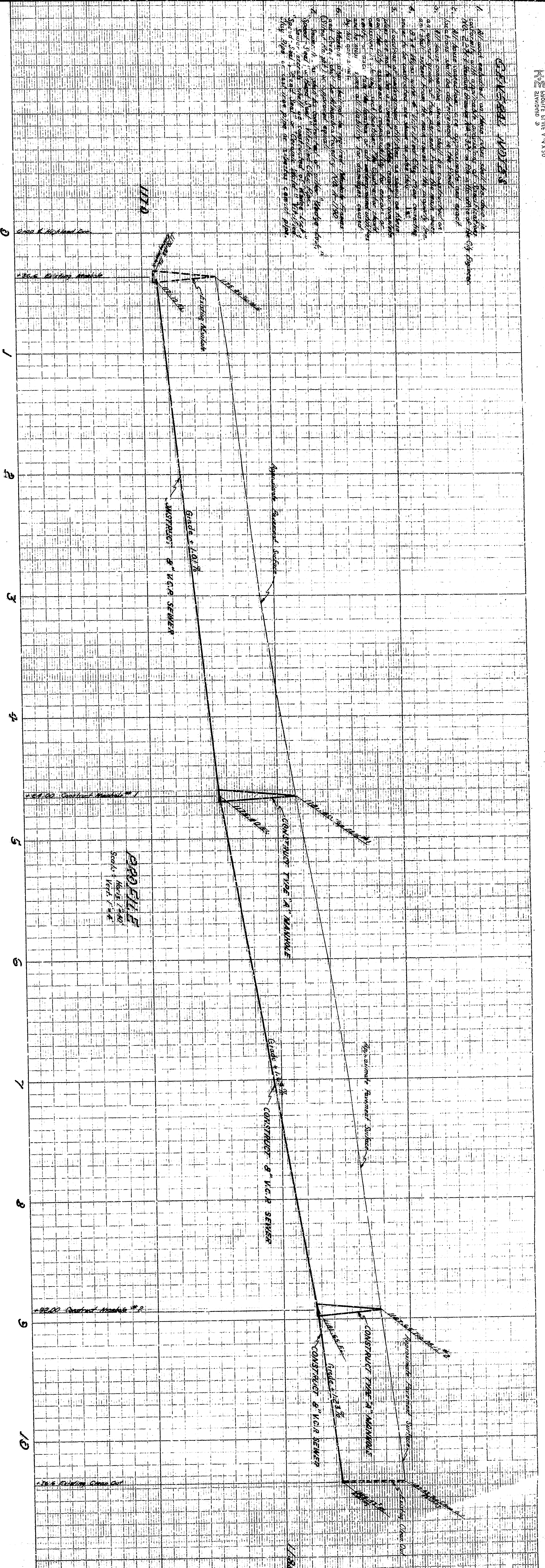
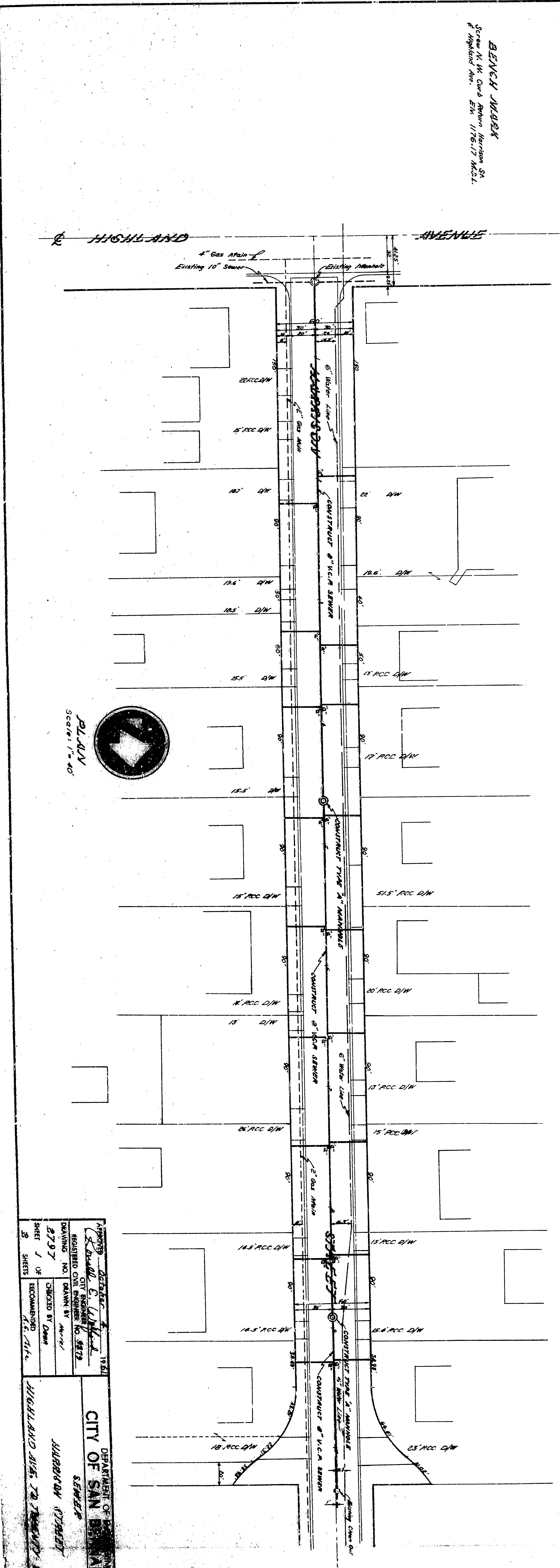


REGISTERED PROFESSIONAL ENGINEER
K. E. STUBBS
No. 1176, State of California

REGISTERED PROFESSIONAL ENGINEER
K. E. STUBBS
No. 1176, State of California

REGISTERED PROFESSIONAL ENGINEER
K. E. STUBBS
No. 1176, State of California

BENCH MARK
Screw N. W. Cor. Arden Harrison St
& Highland Ave. Elevation 1176.17 M.S.L.



PLAN
Scale 1" = 40'

APPROVED	DATE	BY
<i>[Signature]</i>	1/23/21	K. E. STUBBS
REGISTERED CIVIL ENGINEER	NO.	1176
DRAWING NO.	82-240	
DRAWN BY	DATE	
CHECKED BY	DATE	
RECOMMENDED	DATE	
SHEET	1	OF 2
CITY OF SAN ANTONIO DEPARTMENT OF PUBLIC WORKS SEWER DIVISION HARRISON ST. TO 27TH ST. SEWER		